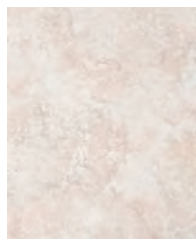
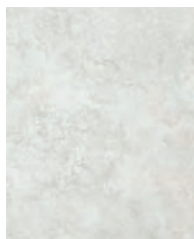


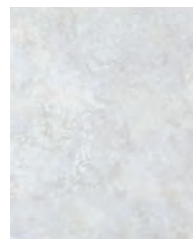
MXMH BASTIA 20x25



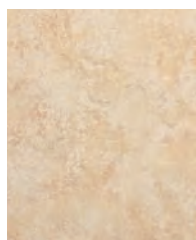
MXMJ AJACCIO 20x25



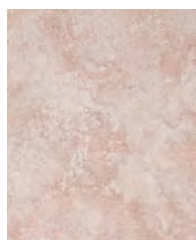
MXML BONIFACIO 20x25



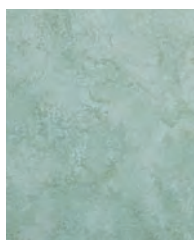
MXMK CALVI 20x25



MXMM BASTIA BEIGE
20x25



MXMN AJACCIO ROSA
20x25



MXMQ BONIFACIO VERDE
20x25



MXMP CALVI AZZURRO
20x25

Corsica

RIF. BASTIA



MXMR 20x25

RIF. AJACCIO



MXMS 20x25

RIF. BONIFACIO



MXMU 20x25

RIF. CALVI



MXMT 20x25



MXMV 5x20



MXMW 5x20



MXMY 5x20



MXMX 5x20



MXR2 20x25



MXR3 20x25



MXR5 20x25



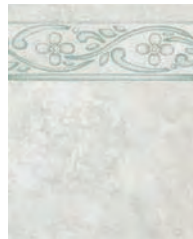
MXR4 20x25



MXMZ BASTIA 1 20x25



MXN0 AJACCIO 1 20x25



MXN2 BONIFACIO 1 20x25



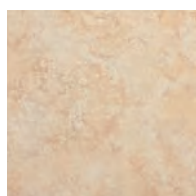
MXN1 CALVI 1 20x25

PAVIMENTI COORDINATI / CO-ORDINATED FLOORS / CARREAUX DE SOL ASSORTIS
 KOORDINIERTE-BODENBELÄGE / PAVIMENTOS COORDINADOS / КООРДИНИРОВАННЫЕ ПОЛЫ

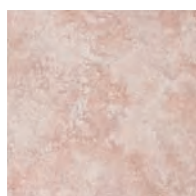
CORSICA 20x20



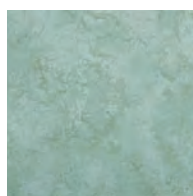
Conforme/According to/Conforme
 Gemäß/Conforme/Соответствует
UNI EN 14411 - L BIII



MXX6 BASTIA BEIGE
 PAV. 20x20



MXX7 AJACCIO ROSA
 PAV. 20x20







MXX9 BONIFACIO VERDE
 PAV. 20x20



MXX8 CALVI AZZURRO
 PAV. 20x20



IMBALLI/ PACKING / EMBALLAGES / VERPACKUNGEN / EMBALAJES / УПАКОВКИ								Spessore Thickness Dicke Épaisseur Espesor Толщина							
	Pezzi Pieces Stck Pièces Piezas Штуки	Mq Sq. Mt Qm Mq Mq Кв. м	Kg Kr	Scatole Box Karton Boite Caja Коробки	Mq Sq. Mt Qm Mq Mq Кв. м	Kg Kr	Kg. Mq Kg/Sq.M Kg/Qm Kg/Mq Kg/Mq Kr / Кв. м			Pezzi Pieces Stck Pièces Piezas Штуки	Scatole Box Karton Boite Caja Коробки	Spessore Thickness Dicke Épaisseur Espesor Толщина			
20x25	32	1,600	18,81	60	96,00	1.143	11,68	7	20x25 Decoro	32	60	7			
20x20 Pav.	37	1,480	19,36	64	94,72	1.254	13,00	7,5	20x25 Decoro	8					
									5x20 Listello	10					